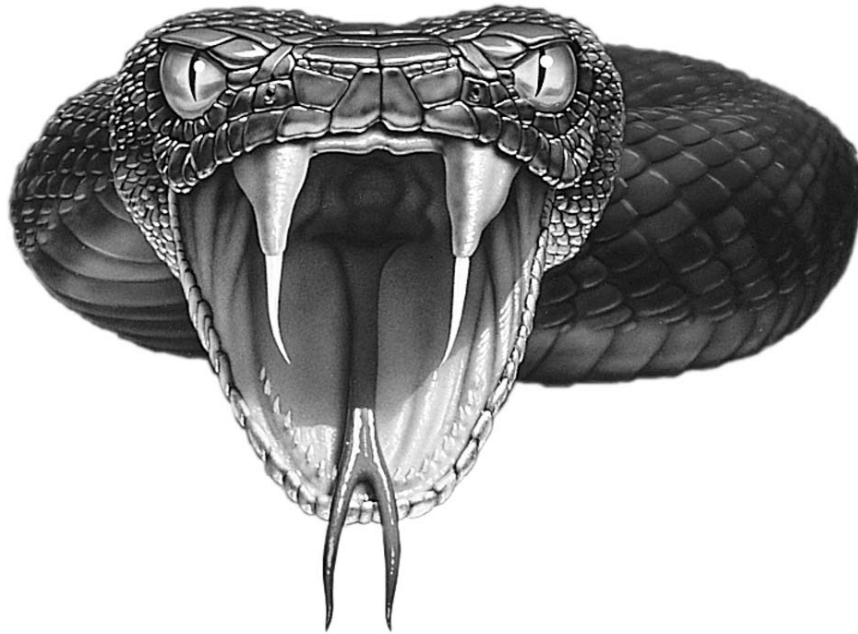


# ***VIPER***



## **106V**

### **Installation Guide**

## contents

what is included .....	3	touch-key receptacle wiring guide .....	7
system configuration .....	3	passenger compartment .....	7
wire connection guide .....	4	mounting the control unit .....	7
immobiliser harness wiring diagram .....	4	programming instructions .....	8
power harness wiring diagram	4	certificate of installation .....	8
touch-key harness wiring diagram .....	5	troubleshooting .....	8
immobiliser harness wiring guide .....	6	wiring reference guide .....	9
power harness wiring guide	6	notes .....	10

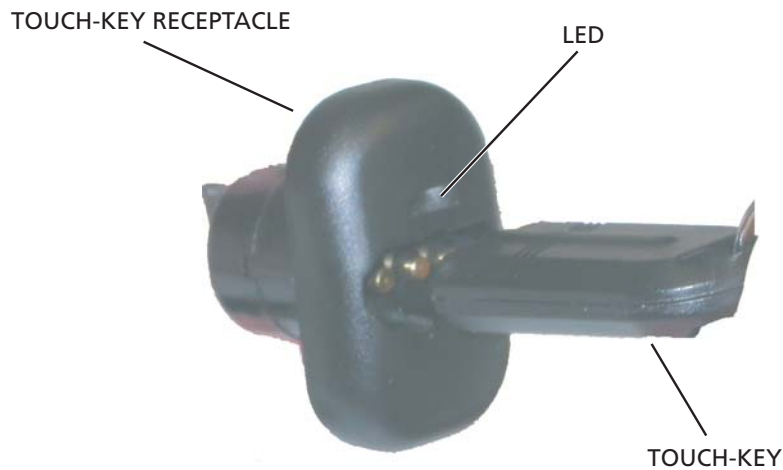
**IMPORTANT!** *The Viper 106V system is designed to be installed in any petrol or common rail diesel vehicle with a 12-volt battery.*

## what is included

- One control module with 9-wire immobiliser harness
- One Owner's Guide
- 2-Touch-keys
- Two window decals
- Touch-key receptacle with LED
- One hardware pack

## system configuration

The Viper 106V system has a control module which works in conjunction with a touch-key to allow the vehicle to be started. A total of 3 touch-keys can be programmed into the control module.

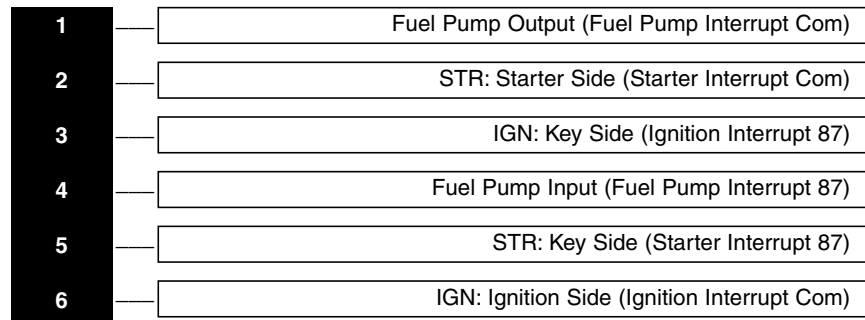


**NOTE:** The touch-key receptacle must be installed so that the LED is visible to the vehicle operator when using the touch-key.

# wire connection guide

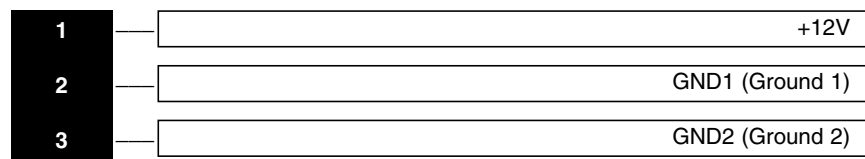
## immobiliser harness wiring diagram

**NOTE:** All wires are BLACK. Each pair is an immobiliser circuit input and output. Each wire is marked with its function. The description listed below is the marking on each wire and then its function, in brackets.



## power harness wiring diagram

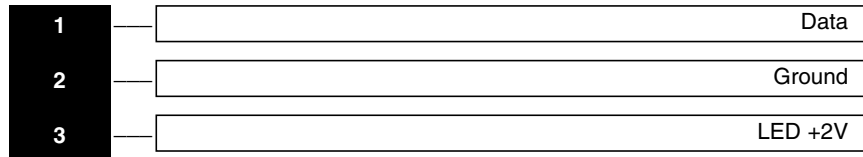
**NOTE:** All wires are BLACK. Each wire is marked with its function. The description listed below is the marking on each wire and then its function, in brackets.



**NOTE:** Please remove all wire description tags from wiring after connection to the vehicle.

## touch-key harness wiring diagram

**NOTE:** All wires are BLACK. Each wire is marked with its function. The Touch-Key harness has 3-pin connectors to facilitate the connection from the control module to the Touch-Key receptacle. The functions are listed below for reference only.



## immobiliser harness wiring guide

This guide describes in detail the connection of each wire. Please read the instructions carefully to ensure a thorough understanding of this unit and how it operates. Locate the main ignition, starter and fuel pump circuit wires with a multimeter. Cut the appropriate wire and attach the key side and car side wires to the corresponding wires on the 6-wire immobiliser harness.

### IGN: Key Side

This wire is connected to the ignition key side of the ignition circuit. This wire should be +12volt with the ignition turned on and in the cranking position.

### IGN: Ignition Side

Connect this wire to the ignition output side of the ignition circuit.

### STR: Key Side

This wire is connected to the starter key side of the starter solenoid.

### STR: Starter Side

Connect this wire to the starter solenoid side of the starter circuit.

### Fuel Pump Input

This wire is connected to the input side of the fuel pump circuit or ground if not used.

### Fuel Pump Output

Connect this wire to the fuel pump output high polarity side of the fuel pump circuit or ground if not used.

## power harness wiring guide

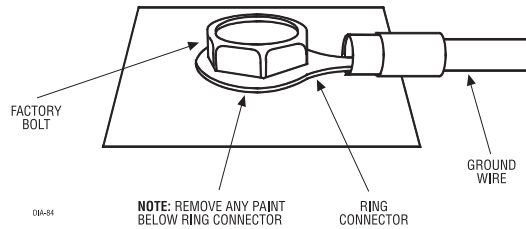
### +12V

Connect the +12V wire via fuse supplied to an unfused source at the vehicle's fuse-box.

### GND1 and GND2

Connect the BLACK wires (2 and 3) to separate ground locations using a factory bolt that does NOT have any vehicle component grounds attached to it or drill a new hole if required. A screw should only be used in conjunction with a two-sided lock washer. Under dash brackets and door sheet metal are not acceptable ground points.

**NOTE:** Please remove all wire description tags from wiring after connection to the vehicle.



## touch-key receptacle wiring guide

Mount the touch-key receptacle in a position accessible to the operator of the vehicle and so that the LED is visible to the operator. A bracket is provided to allow an additional mounting method if required.

Plug the touch-key receptacle harness into the wire harness plug from the control module.

## passenger compartment

### mounting the control unit

**NOTE:** The Viper 106V control unit must be installed inside the vehicle. Under no circumstances should the unit be installed under the bonnet or other similarly hostile environment.

Select an area behind the dash that will allow you to securely fasten the unit using the screws provided in the hardware pack. Do not mount the unit near moving parts or in direct path of air blowing from the heater vents.

**NOTE:** When mounting the control module the metal enclosure must be used.

## programming instructions

Use the procedure below to program touch-keys into the system. A maximum of 3 touch-keys can be programmed into the system.

*NOTE: In order to program touch-keys into the system, the system must be disarmed.*

1. Turn the ignition On then Off 12 times.
2. The LED will illuminate continuously.
3. Insert the touch-key to be programmed into the touch-key receptor.
4. The LED will turn Off for 1-second and then back On continuously. The touch-key is now programmed.
5. After 15 seconds of no activity the LED will extinguish and the system will exit the programming routine.

*NOTE: If more than one touch-key is required to be programmed, then repeat steps 3 and 4 after the first touch-key is programmed.*

## certificate of installation

After installation you must fill out the certificate of installation. Once you have filled out all information on the certificate the customer must sign and date it. Distribute the copies as follows:

- White (top) copy - customer
- Blue copy - customer's insurance broker
- Pink copy - Directed Electronics, UK office
- Green copy - installing dealer

## troubleshooting

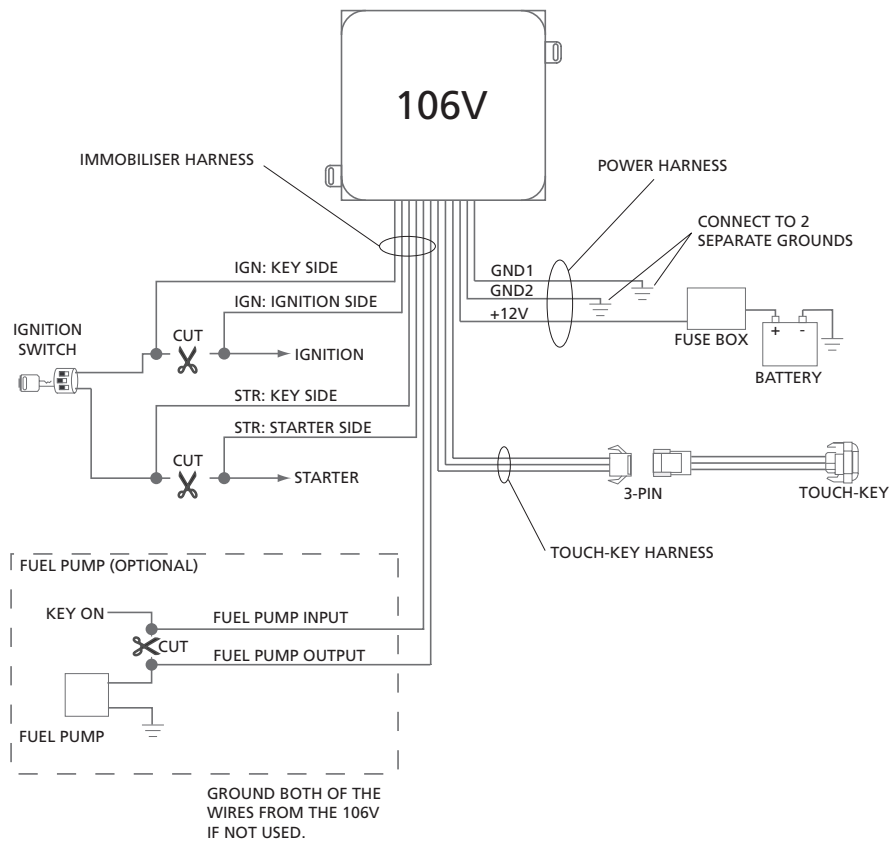
The Touch-Key does not work.

- Make sure that the harness is plugged in. (Refer to the wiring reference guide.)
- Has the Touch-Key been programmed to the system.

The system does not work (no LED illumination).

- Check the fuse in the power harness.

## wiring reference guide



**NOTE:** The current draw for the entire system is less than 9 mA. Power supply voltage range is 9 to 16 volts. The current handling capacity for each immobilisation circuit is 20amps continuous/30amps peak.

**NOTE:** Please remove all wire description tags from wiring after connection to vehicle.

## notes

[illegible]