

Setting two car operation using Alpine Security SEC-8052/8049/8057/8058/8059 and SEA-8081.

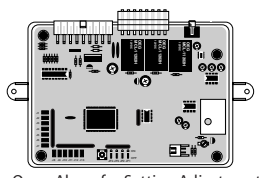
This function is used when the end user wishes to arm/disarm two or more vehicles using one remote. In order to do this, the Alpine alarm must have the capabilities of two or more car operation. During setup you must have all cars present for remote coding and dip switch setup.

1) Setting up CAR #1

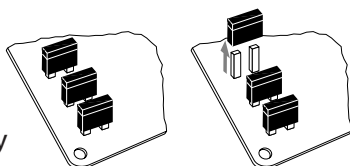
After installing the alarm system in the desired car #1, make sure that the alarm CPU brain responds to the remote it shipped with by arming and disarming the alarm. If it does not disarm/arm try recoding the remote to the alarm.

2) Setting up CAR #2

Locate the Alpine alarm in the 2nd vehicle and open the alarm module. The alarm will have to be accessible to change settings. In the alarm brain, switch car selector setting to car #2. Your alarm switch settings may be different from what is shown on right.



Open Alarm for Setting Adjustment



Switch setting for second car

3) Code Learning Alarm Remote Programming

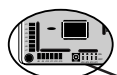
Program Car #1's remote control to Car #2's alarm brain. Open Car #2's main unit.

A. PRESS and HOLD the disarm/Valet switch. Be aware that you will be holding the valet switch on for the duration of the programming procedure.



Press and Hold the Disarm/Valet switch. Continue to hold through entire coding sequence

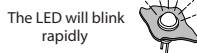
B. Before the system enters the VALET mode, press and release the RESET button inside the main unit.



Before the system enters Valet mode, press and release the RESET Switch

RESET Switch

C. When the status LED begins to blink rapidly, press the TX button on the remote control.



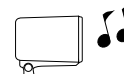
The LED will blink rapidly



Press the TX button

D. The siren will chirp twice to indicate that the code has been accepted.

The Siren will chirp twice



E. If any additional remote controls need to be programmed, repeat steps 3A through 3D.

F. When you have finished programming remote controls, release the disarm/valet switch. The LED will stop blinking indicating the procedure has been terminated and complete.

4) Program Car #2's remotes to Car #1 by following steps 3A - 3F.

5) After remotes have been programmed you can disarm/arm Car #1 or Car #2 from remotes that have just been programmed. Push and hold EXT1/VALET and TX/PANIC simultaneously for 4 seconds to switch vehicle operation. The LED on the remote should blink once for Car #1 or twice for Car #2. Use this method to switch between Car #1 and Car #2.

